



SH
MH
WMH



Multi-jet model **MH**



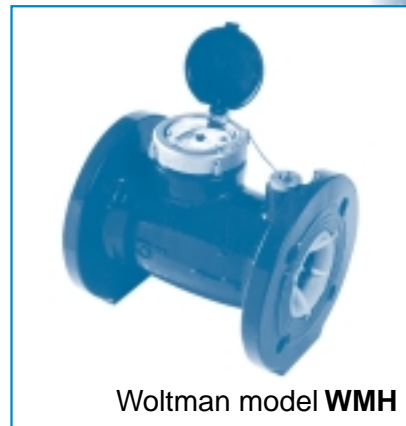
Single-jet model **SH**

**Description
& Features:**

All dimensions and other features (like magnetic drive, electronic output options, types of registers, etc.) correspond to the relevant cold water models S, M, WM.

Sizes:

SH - 1/2" threaded.
MH - 1/2" - 2" threaded.
WMH - 2"(50mm) - 8"(200mm) flanged.



Woltman model **WMH**

TECHNICAL SPECIFICATIONS:

**Maximum working
pressure:**

SH & MH - 10 bar
WMH - 16 bar

**Max working
temperature:**

90°C

Body:

SH & MH - corrosion proof copper alloy
WMH - Polyester coated cast iron

Flanges:

ISO, BS, AWWA (other - optional)

More information:

See relevant leaflets - S, M, WM

INSTALLATION REQUIREMENTS:

SH & MH

(single-jet & multi-jet): • Dial face Horizontal.

WMH (woltman):

- The water meter may be installed in any position. For non-horizontal position the flow shall be upwards.
- Straight pipe section of the same diameter D as the meter, having lengths of 10D and 5D shall be installed upstream and downstream of the meter, respectively.

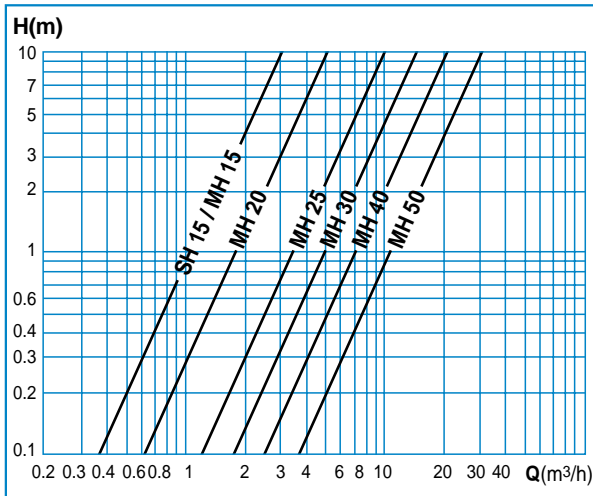




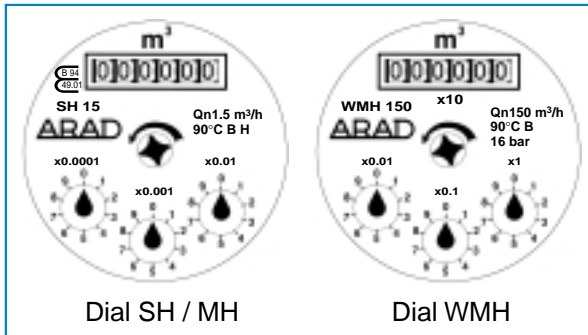
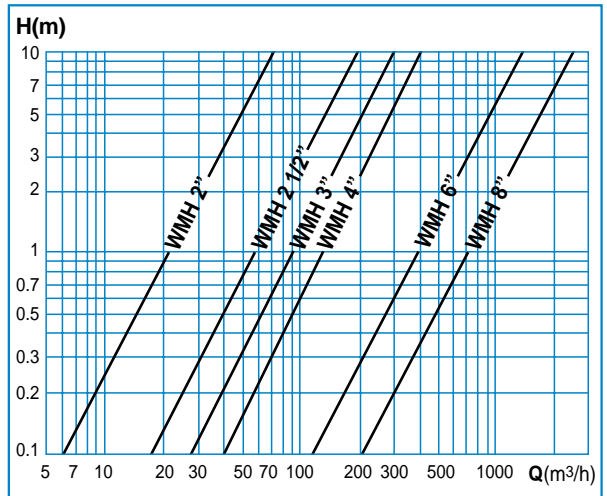
PERFORMANCE DATA

Models		SH	MH							WMH						
Nominal sizes	mm	15	15	20	25/7	25/10	30	40	50	50	65	80	100	150	200	
	inch	1/2	1/2	3/4	1	1	1 1/4	1 1/2	2	2	2.5	3	4	6	8	
Permissible peak load for short periods	Qmax	m ³ /h	3	3	5	7	10	12	20	30	40	100	130	235	520	875
Nominal flow rate	Qn	m ³ /h	1.5	1.5	2.5	3.5	5	6	10	15	15	25	40	60	150	250
Permanent flow rate	Qp	m ³ /h	-	-	-	-	-	-	-	-	20	40	55	100	215	365
Lowest flow rate measured within ±3%	Qt	m ³ /h	0.12	0.12	0.2	0.28	0.4	0.48	0.8	3	2	2.2	2.5	7	8	
Lowest flow rate measured within ±5%	Qmin	m ³ /h	0.03	0.03	0.05	0.07	0.1	0.12	0.2	0.45	0.45	0.75	1.2	1.5	4.5	5
Starting flow		m ³ /h	0.012	0.012	0.017	0.02	0.025	0.03	0.05	0.15	0.15	0.3	0.3	0.5	1.5	1.5
Smallest readable unit		lit	0.1	0.1	0.1	0.1	0.1	0.1	1	1	1	1	1	10	10	100
Maximum register capacity		m ³	10 ⁵	10 ⁵	10 ⁵	10 ⁵	10 ⁵	10 ⁵	10 ⁶	10 ⁶	10 ⁶	10 ⁶	10 ⁶	10 ⁷	10 ⁷	10 ⁸

HEAD LOSS CURVES MH/SH



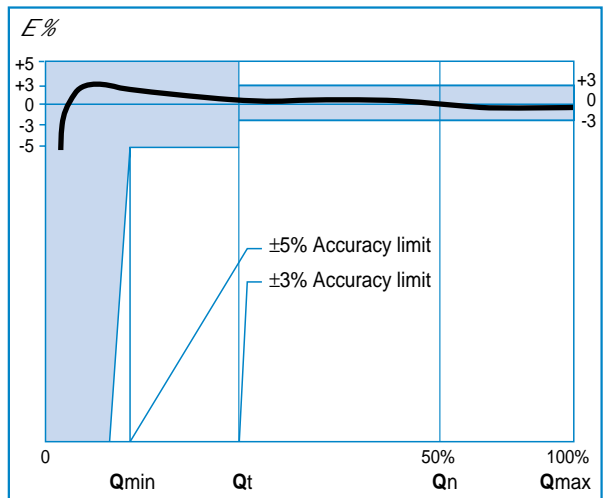
HEAD LOSS CURVES WMH



Dial SH / MH

Dial WMH

ACCURACY CURVE



TD-148 9:00 SH / MH / WMH



ARAD LTD. DALIA

WATER MEASURING TECHNOLOGIES