



ARAD LTD. DALIA - electronic Division

## Rate of flow and volume transmitter and display units

**RTDT**  
**RTD**  
**RFT**

T E C N I C A I s p e c i f i c a t i o n s

### RTDT

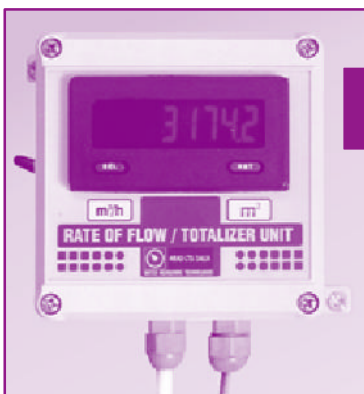


The new generation Rate of Flow/Totalizer Display and transmitter (RTDT) unit displays the volume and the instantaneous flow rate that flows through the Arad water meter\* connected to it. At the same time, it generates an analog (4-20 mA) output signal proportional to the rate of flow and transmits it to a remote location.

A single digital readout alternatively displays the volume and rate of flow functions: an 8-digit display for the totalizer / a 6-digit display (with the annunciator "R") for the rate of flow display.

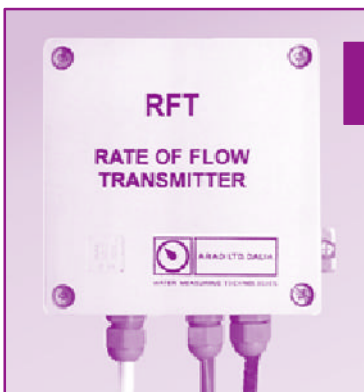
The digital readout can be programmed to display values in cubic meters/hour, liters/min., gal./min., etc. The unit also incorporates push-buttons for totalizer reset and switching between the display functions. The display modes can be switched automatically or manually.

### RTD



The rate of Flow/Totalizer Display (RTD) is a new generation, compact, cost-effective unit that provides precise, low-cost, instant, in-field readouts of the volume and instantaneous flow rate values of the Arad water meter connected to it. The digital readout is identical to the one in the RTDT.

### RFT



The rate of Flow Transmitter (RFT) is a compact, new generation, cost-effective transmitter unit that fills the needs for low-cost, in-field, water metering data collection/transmission. The RFT generates a 4-20 mA signal, proportional to the rate of flow of the Arad water meter\* connected to it, and, via cable, transmits it to remote locations.

\* All of the above units must be attached to an Arad water meter with an EF type electrical output. For more information, consult the appropriate leaflet. Please contact us at the address below for more details.



ARAD LTD. DALIA

WATER MEASURING TECHNOLOGIES

RTDT  
RTD  
RFT



ARAD LTD. DALIA - electronic DIVISION  
rate of flow and volume  
transmitter and display units

	RTDT	RTD	RFT
<b>ELECTRICAL SIGNALS</b>			
Input Signals	The active input pulse is up to 15 VDC square wave, with a maximum frequency of 300 Hz and minimum pulse of three msec. For non-Arad electrical output, a dry contact output or an NPN transistor output can be connected to the input terminals.	Same as RTDT	Same as RTDT
Output Signals	Current output range: 4-20 mA.	No output	Same as RTDT
<b>REMOTE READ OUT</b>	The unit can be installed at a distance of up to 100 meters from the water meters. From this location, an output cable is laid to the 4-20 mA system input at a distance of up to 1000m. provided the impedance of the cable and the peripheral equipment is not greater than 500 Ohms. If the peripheral equipment (PC, lap-top, printer, etc.) is provided with the appropriate software, the 4-20 mA input can be converted to volume read-out in addition to the rate of flow readout.	No output	Same as RTDT
<b>CABLES</b>			
From Meter to Unit	2 wire cable and shield <ul style="list-style-type: none"> <li>• Conductor: Stranded, tinned copper:</li> <li>Insulation: polyethylene</li> <li>• Drain Wire: Stranded, tinned copper</li> <li>• Shield: Extruded coating of semi conductive plastic.</li> <li>• Outer Jacket: PVC, gray</li> </ul> Temp. Rating: - 20°C deg. to 80°C deg. Notes: The standard length of cable attached to the EF output on the water meter register is 1.5 m. Refer to the internal PCB layout engraving for cable connection specifications.	Same as RTDT	Same as RTDT
From Unit to User Equipment	<ul style="list-style-type: none"> <li>• 2 wire cable, unshielded (not provided with unit)</li> <li>• 24 gauge minimum</li> </ul>	No output	Same as RTDT

CHARACTERISTICS	RTDT	RTD	RFT
Operating temperature	0°C - 60°C	0°C - 60°C	0°C - 60°C
Storage temperature	-35°C - 85°C	-35°C - 85°C	-35°C - 85°C
Dimensions (mm)	105x180x95	100x100x70	100x100x70
Weight (gm)	800	500	600
Input Power (all units)	AC mains: 220 VCA, 110 VAC or 24 VAC, 50-60 Hz		

TD-1015-01 RTDT



ARAD LTD. DALIA

WATER MEASURING TECHNOLOGIES

All of the above units must be attached to an Arad water meter with an EF type electrical output. For more information, consult the appropriate leaflet, or contact us at the address below for more details.